

A magnetic-field-effect transistor and spin transport

R. N. Gurzhi, A. N. Kalinenko, A. I. Kopeliovich, and A. V. Yanovsky

B. Verkin Institute for Low Temperature Physics & Engineering of the National Academy of Sciences of the Ukraine, 47 Lenin Ave, Kharkov, 61103, Ukraine

E. N. Bogachek and Uzi Landman^{a)}

School of Physics, Georgia Institute of Technology, Atlanta, Georgia 30332-0430

(Received 19 May 2003; accepted 7 October 2003)

A magnetic-field-effect transistor is proposed that generates a spin-polarized current and exhibits a giant negative magnetoresistance. The device consists of a nonmagnetic conducting channel (wire or strip) wrapped, or sandwiched, by a grounded magnetic shell. The process underlying the operation of the device is the withdrawal of one of the spin components from the channel, and its dissipation through the grounded boundaries of the magnetic shell, resulting in a spin-polarized current in the nonmagnetic channel. The device may generate an almost fully spin-polarized current, and a giant negative magnetoresistance effect is predicted. © 2003 American Institute of Physics. [DOI: 10.1063/1.1630839]

Spintronic devices for storage and transport of information and for quantum computations have been the subject of increasing interest.^{1,2} Here, we propose a scheme for a magnetic-field-effect transistor (MFET), in which the electric current flow is governed by a magnetic field in contrast to conventional electronic devices (e.g., the silicon-based FET), which are controlled by an electric field. The purpose of the proposed spin-guide scheme pertains to generation and transport of electric currents characterized by a high degree of spin polarization.

We propose to use a “sandwich” configuration, with a nonmagnetic (NM) conducting channel and a surrounding magnetic material (MM) whose external boundaries are grounded (see Fig. 1). Electric current flows parallel to the NM/MM interface, instead of being normal to it as in a spin filter.^{3–5} Underlying the operation of the device is the removal of one of the current spin components from the NM channel, whereas in the spin-filter scheme, spin polarization in a NM conductor is created by electrons injected from a magnetic material.

Let an unpolarized constant current be driven through the channel entrance. Away from the channel entrance a difference will develop between the spin-up and spin-down currents. Nonequilibrium electrons with one of the spin directions (that coincides with the majority-spin direction in the magnetic layer: spin-down, for example) will preferentially leave the nonmagnetic channel; that is, the transparency of the NM/MM interface is different for spin-up and spin-down electrons due to the conductivity difference in these materials. With high probability (particularly for a thin magnetic shell) these electrons will dissipate at the grounded external boundary without return to the channel. Consequently, a polarized electric current is generated in the channel with the polarization increasing as a function of the distance from the channel entrance (due to depletion of the spin-down carriers).

For implementation of the device we consider two

classes of magnetic materials for the magnetic shell. (1) Dilute II-VI magnetic semiconductors (DMS): these compounds may have a sufficiently high degree of spin polarization (SP)⁵ because of the very large Zeeman splitting of the spin subbands. When the Fermi level in the DMS lies below the bottom of one of the spin subbands, nearly full SP of the DMS may be reached. Thus, using a DMS [consisting, e.g., of (Zn,Mn,Be)Se as the MM] and a lattice-matched (Zn,Be)Se as the NM channel, one may achieve conditions in which all the electrons in the magnetic material are fully spin polarized and the magnetic shell will not transmit electrons with one of the spin directions [spin-up in our example (see Fig. 1)]. (2) Alternatively, ferromagnetic metals (like Ni, Fe, or Co) may be used for the magnetic shell. In contrast to ordinary electronic devices where a combination of a metal with a semiconductor is used, our scheme may be implemented as an all-metal device

This device exhibits sensitivity to changes in the magnetic field. Indeed, the aforementioned selective transparency of the NM/MM interface provides different decay length-scales for the spin-up and spin-down electrons along the channel. Therefore, if we create an unmagnetized (UM) magnetic shell by switching-off the magnetic field, the dissipation of all the nonequilibrium electrons (i.e., of both spin directions) at the grounded boundary will be faster than the rate of their arrival to the channel exit; that is, almost all the electrons may not reach the exit of the spin guide because of

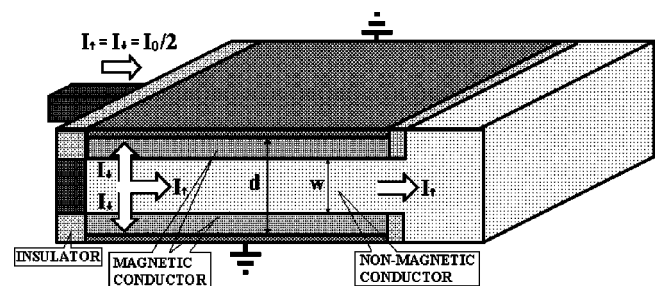


FIG. 1. A schematic of the spin guide. w is the width of the NM channel and d is the distance between the grounded magnetic contacts.

^{a)}Electronic mail: uzi.landman@physics.gatech.edu

a larger probability to dissipate to the grounding. Thus, by changing the applied magnetic field, we may change significantly the resistance of the spin-guide device (i.e., a strong negative magnetoresistance effect is predicted), and it may operate as a transistor governed by the magnetic field; that is, a MFET.

Consider $\mu_{\uparrow,\downarrow}$, the nonequilibrium parts of the electrochemical potentials for the two spin directions. In the diffusive regime, the spin transport is described by (see, e.g., Ref. 4)

$$\text{div}(\sigma_{\uparrow,\downarrow}\nabla\mu_{\uparrow,\downarrow})=\Pi_0e^2\tau_{sf}^{-1}(\mu_{\uparrow,\downarrow}-\mu_{\downarrow,\uparrow}), \quad (1)$$

where $\Pi_0^{-1}=\Pi_{\downarrow}^{-1}+\Pi_{\uparrow}^{-1}$, $\Pi_{\uparrow,\downarrow}$ are the densities of states at the Fermi level of the up and down spins, τ_{sf} is the spin-flip scattering time, and $\sigma_{\uparrow,\downarrow}$ are the corresponding conductivities. Equation (1) holds under the assumption that both the spin-flip mean free paths $l_{\uparrow,\downarrow}^{sf}=v_{F\uparrow,\downarrow}\tau_{sf}$ ($v_{F\uparrow,\downarrow}$ are the Fermi velocities of the spin-up and spin-down electrons), and the widths of the channel (w) and the magnetic shell [$w_M=(d-w)/2$] exceed significantly the diffusion step-lengths $l_{\uparrow,\downarrow}$ (i.e., $l_{\uparrow,\downarrow}^{sf}, w, w_M \gg l_{\uparrow,\downarrow}$); otherwise, the problem should be treated within the kinetic equation approach. The electric current densities $J_{\uparrow,\downarrow}=(\sigma_{\uparrow,\downarrow}/e)\nabla\mu_{\uparrow,\downarrow}$ are related to the electrochemical potentials via Ohm's law.

Let the x axis lie in the middle of the channel and be directed along it, and take the z axis to be perpendicular to the interfacial planes, with the origin of the coordinate system located in the center of the entrance into the channel (see Fig. 1). The conductivity of the NM channel is spin independent and constant ($\sigma_{N\uparrow}=\sigma_{N\downarrow}=\sigma_N$), and we impose the boundary conditions $\mu_{\uparrow,\downarrow}=0$ at $z=\pm d/2$ reflecting the grounding of the external planar boundaries. The solutions of Eq. (1) that we seek consist of a sum of terms, with each expressed as products of two functions, one depending on the x variable, and the other depending on the z coordinate and on the discrete indices “ \pm ” [see Eq. (4)]. To find the general solution of Eq. (1), we introduce the functions $f_{\uparrow,\downarrow}=f^{\pm}(\sigma_{\downarrow,\uparrow}/\sigma_i)f^{\mp}$, where the functions $f^{\pm}(z)$ are the z -dependent parts [multiplying exponential decay factors in the x direction $\exp(-kx)$] of the special solutions of Eq. (1), $\sigma_i=\sigma_{\uparrow}+\sigma_{\downarrow}$. Due to the symmetry of the system, we obtain

$$f^{\pm}=\begin{cases} C_N^{\pm}\cos(\kappa_N^{\pm}z), & |z|<w/2, \\ C_M^{\pm}\sin[\kappa_M^{\pm}(d/2-z)], & |z|>w/2, \end{cases} \quad (2)$$

$$\kappa_{M,N}^+=k, \quad \kappa_{M,N}^-=\sqrt{k^2-\lambda_{M,N}^{-2}},$$

where the diffusion length $\lambda_{M,N}$ is the characteristic length-scale for equilibration of the spin subsystems in the magnetic (M) and nonmagnetic (N) regions, respectively, $\lambda=(\sigma_0\tau_{sf}/e^2\Pi_0)^{1/2}$ (with the corresponding subscripts M and N as appropriate), $\sigma_0^{-1}=\sigma_{\uparrow}^{-1}+\sigma_{\downarrow}^{-1}$. The functions $f_{\uparrow,\downarrow}$ have to satisfy the equations

$$\frac{d}{dz}\left(\sigma_{\uparrow,\downarrow}\frac{df_{\uparrow,\downarrow}}{dz}\right)=\frac{\Pi_0e^2}{\tau_{sf}}(f_{\uparrow,\downarrow}-f_{\downarrow,\uparrow})-k^2\sigma_{\uparrow,\downarrow}f_{\uparrow,\downarrow}. \quad (3)$$

Rewriting Eq. (3) for the functions $\sqrt{\sigma_{\uparrow,\downarrow}}f_{\uparrow,\downarrow}$ we obtain an equation for the eigenfunctions of a self-adjoint operator with the eigenvalues k^2 . A full set of the solutions $\sqrt{\sigma_{\uparrow,\downarrow}}f_{\uparrow,\downarrow,n}$ of Eq. (3) corresponding to the possible values of the param-

eters k_n^2 is a complete basis set in the interval $|z|<d/2$. Consequently, the general solution of Eq. (1) is given by

$$\mu_{\uparrow,\downarrow}=\sum_n(a_n^+e^{k_nx}+a_n^-e^{-k_nx})\frac{\sqrt{\sigma_{\uparrow,\downarrow}}f_{\uparrow,\downarrow,n}}{\sqrt{K_n}}, \quad (4)$$

$$K_n=\langle(\sqrt{\sigma_{\uparrow}}f_{\uparrow,n})^2+(\sqrt{\sigma_{\downarrow}}f_{\downarrow,n})^2\rangle_d,\langle\cdots\rangle_{d,w} \\ =\int_0^{d,w/2}\dots dz,$$

where the constants a_n^{\pm} are determined by the boundary conditions at the ends of the spin guide, in conjunction with the orthogonality of the functions $(\sigma_{\uparrow,\downarrow})^{1/2}f_{\uparrow,\downarrow,n}$ for different n values. The current densities at the channel entrance ($x=0$) are given by $J_{\uparrow,\downarrow}(x=0,z)$, and for $\mu_{\uparrow,\downarrow}=0$ at $x=L$, where L is the spin-guide length, we obtain

$$a_n^{\pm}=\frac{\mp c_n}{1+e^{\pm 2k_nL}}, \quad c_n=\sum_{\uparrow,\downarrow}\left\langle\frac{eJ_{\uparrow,\downarrow}(x=0,z)f_{\uparrow,\downarrow,n}}{k_n\sqrt{\sigma_{\uparrow,\downarrow}}K_n}\right\rangle_d. \quad (5)$$

The coefficients $C_{N,M}^{\pm}$ [see Eq. (2)] are determined by matching the functions $\mu_{\uparrow,\downarrow}$ and the currents (i.e., the derivatives $\sigma_{\uparrow,\downarrow}\partial\mu_{\uparrow,\downarrow}/\partial z$) at $z=\pm w/2$ (see Ref. 6). The possible values of the damping parameter k_n may be found from the consistency condition of these equations:

$$\left[1-\frac{2\sigma_N}{\sigma_{Mt}}\tan\left(\frac{k_nw}{2}\right)\tan(k_nw_M)\right] \\ \times\left[\frac{2\sigma_{M\uparrow}\sigma_{M\downarrow}}{\sigma_{Mt}}-\sigma_N\frac{\kappa_N^-}{\kappa_M^-}\tan\left(\frac{\kappa_N^-w}{2}\right)\tan(\kappa_M^-w_M)\right] \\ =\sigma_N\left(\frac{\sigma_{M\uparrow}-\sigma_{M\downarrow}}{\sigma_{Mt}}\right)^2\frac{k_n}{\kappa_M^-}\tan\left(\frac{k_nw}{2}\right)\tan(\kappa_M^-w_M). \quad (6)$$

If constant current is injected into the NM channel only (i.e., at $x=0$, $I_{\uparrow,\downarrow}=I_0/2$ at $z<w/2$ and $I_{\uparrow,\downarrow}=0$ at $z>w/2$), and restricting ourselves to current variation only in the x direction (i.e., averaging in the transverse (z) direction), the current in the channel is given by

$$I_{\uparrow,\downarrow}=\frac{2I_0}{w}\sum_n\frac{\sigma_N\cosh[k_n(L-x)]}{K_n\cosh(k_nL)} \\ \times\left(\langle f_n^+ \rangle_w^2 \pm \frac{\langle f_n^+ \rangle_w \langle f_n^- \rangle_w}{2}\right). \quad (7)$$

From these equations, we can calculate the degree of SP of the current in the channel: $\alpha=(I_{\uparrow}-I_{\downarrow})/(I_{\uparrow}+I_{\downarrow})$. The solutions given in Eq. (7) exhibit exponential decreases along the channel, with different decay rates for the two spin directions. The main contribution to the spin-up current is $I_{\uparrow}(x)\propto\exp(-k_{\uparrow}x)$, where $k_{\uparrow}\approx k_1\equiv k_{\min}$ is the smallest solution from the set $\{k_n\}$ determined by Eq. (6), while the spin-down current decays much faster $I_{\downarrow}(x)\propto\exp(-k_{\downarrow}x)$, where $k_{\downarrow}\approx k_2>k_{\uparrow}$. Thus, inside the spin guide, the SP of the current in the NM channel will tend exponentially to unity, that is, $\alpha\approx 1-\exp[-(k_{\downarrow}-k_{\uparrow})x]$; for further details see Ref. 6.

In Fig. 2, we display the x dependence of the degree of SP calculated from Eq. (7). These curves demonstrate exponential growth of the degree of SP with distance from the entrance. In general, the saturation value is dependent on

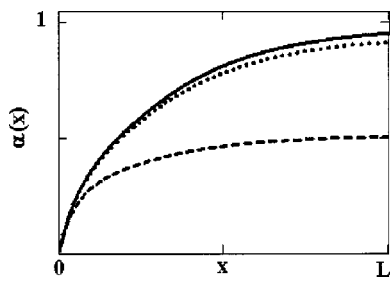


FIG. 2. The degree of SP (α) of the current plotted vs the longitudinal (x) coordinate along the spin guide; the curves were calculated from Eq. (7) with $\sigma_{M\uparrow}/\sigma_{M\downarrow}=0.3$, $\sigma_{M\downarrow}/\sigma_N=1$, $w/d=0.28$, $L=4d$, $w_M/\lambda_M=0.225$, and $w/\lambda_N=0.1$ (solid), $w/\lambda_N=0.5$ (dotted), $w/\lambda_N=0.7$ (dashed).

spin-flip processes in the materials used for the device. Comparison of the curves for different w/λ_N illustrates that higher current polarization is achieved for smaller ratios between the width of the NM channel and the spin-flip length λ_N . The current and SP in the device may be manipulated and tuned continuously with an applied magnetic field. Indeed, by changing the magnetic field the ratio $\sigma_{M\uparrow}/\sigma_{M\downarrow}$ can be changed, and one may tune the current decay parameter k [see Eq. (6)].

Switching off of the magnetic field increases the damping factor of the current from the value k_{\min} (in the case of an ideal magnetic material shell $k_{\min}\approx(\lambda_N\sqrt{2})^{-1}$)⁶ up to k_{UM} , which depends on the ratio of the conductivities of the UM shell and the NM channel: $\tan(k_{UM}w/2)\tan[k_{UM}(d-w)/2]=\sigma_{UM}/\sigma_N$; for the present case, this equation replaces Eq. (6). When $\sigma_{UM}\approx\sigma_N$, we obtain $k_{UM}\approx\pi/d$. Figure 3 depicts the variation of the current along the NM channel when a magnetized (dotted line) or an NM (solid line) shell is

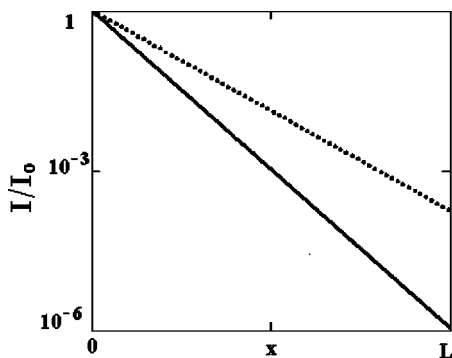


FIG. 3. The normalized current I/I_0 (logarithmic scale) plotted vs the longitudinal (x) coordinate along the spin guide. Equation (7) was used for magnetized (dotted, exhibiting a high value at $x=L$) and UM (solid) shells, with the parameters of the solid line in Fig. 2.

used; the current changes by about three orders of magnitude at the exit ($x=L$) of the MFET. When $\sigma_{M\uparrow,\downarrow}\gg\sigma_N$, the difference between k_{\min} and k_{UM} is small and the field effect is also small. Increase of the NN/MM interface resistance (e.g., via adding barriers), will enhance the effect.

A giant negative magnetoresistance effect may be observed by switching the magnetization directions in the upper and lower magnetic layers from being parallel to each other, to having antiparallel directions. When the upper and lower magnetic layers have parallel magnetization directions, a polarized current will arrive at the channel exit, since electrons with only one spin direction will be transported preferentially through the magnetic layers to the grounding. In contrast, when the magnetic layers' magnetizations are antiparallel, the output current will be unpolarized, and it will decrease significantly in magnitude. This effect could be of particular interest in the case of a ferromagnetic metal shell where residual magnetization may remain (because of domain structure) upon switching off the magnetic field.

In summary, we proposed a scheme for a magnetic-field-effect transistor, that is, a device for generation of highly spin-polarized currents, whose operation is governed by a magnetic field. In this device, nearly complete current spin-polarization may be achieved, even when a magnetic shell with a lower degree of spin polarization is used. Large changes in the current may be brought about through on/off switching of a magnetic field. Furthermore, the magnetic-field sensitivity suggests the MFET as a magnetic-field sensor. Finally, the wide range of measured spin-diffusion lengths (typically of the order of 10 nm in metals and microns in semiconductors⁷) suggests the potential fabrication of nanoscale MFET devices, with possible incorporation of known nanostructures (e.g., nanotubes as the conducting channel).

This research was supported by Grant No. UP2-2430-KH-02 of the CRDF and by the U.S. DOE Grant No. FG05-86ER-45234 (E.N.B. and U.L.).

¹*Semiconductor Spintronics and Quantum Computation*, edited by D. D. Awschalom, D. Loss, and N. Samarth (Springer, Berlin, 2002).

²S. Datta and B. Das, *Appl. Phys. Lett.* **56**, 665 (1990).

³A. G. Aronov, *JETP Lett.* **24**, 32 (1976).

⁴P. C. van Son, H. van Kempen, and P. Wyder, *Phys. Rev. Lett.* **58**, 2271 (1987).

⁵G. Schmidt, G. Richter, P. Grabs, C. Gould, D. Ferrand, and L. W. Molenkamp, *Phys. Rev. Lett.* **87**, 227203 (2001).

⁶R. N. Gurzhi, A. N. Kalinenko, A. I. Kopeliovich, A. V. Yanovsky, E. N. Bogachev, and U. Landman (unpublished).

⁷*Spin Electronics*, edited by M. Ziese and M. J. Thornton (Springer, Berlin, 2001).